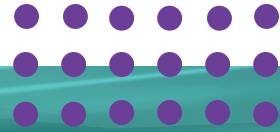


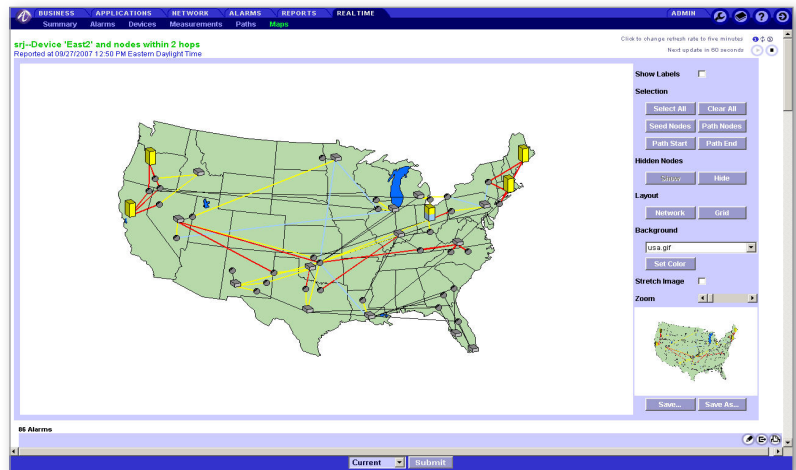
# VitalSuite™ Real-time Event Analysis Software

## Release 10.2



### Monitor and Analyze Packet Data Network Performance

VitalSuite Real-time Event Analysis software helps optimize multi-vendor packet data and voice networks with powerful real-time capabilities that traditional management products cannot match. It offers technically advanced tools to monitor, measure, analyze and visualize performance data and immediately identify network resources that have exceeded defined network service levels. Using the data collection capabilities of the VitalSuite Network Performance Management system, the real-time event analysis software identifies key events as they unfold. This component of Alcatel-Lucent's award-winning VitalSuite solutions portfolio provides the time-critical data needed to address emergent problems before they affect users.



Topology maps and adaptive statistical thresholding enable proactive identification of network resources that are not meeting specified service parameters, as well as congestion hot spots.

### FEATURES

- Flexible, multi-vendor and multi-technology support - monitors diverse resource types and more than 640 devices from more than 50 different vendors
- Industry-leading scalability - supports today's largest, most widely distributed networks from one intuitive GUI
- Real-time surveillance - continuously monitors WAN, IP, Frame Relay and ATM traffic, elements and interfaces network-wide
- Real-time displays - provides choice of customizable topology maps, path displays, graphs, tabular reports; all with immediate drill-down functionality for more details
- Instantaneous event notification - provides email notification, graphical screen displays and trap messages
- Powerful event analysis - advanced tools filter, analyze and summarize raw performance data, present it in instantly comprehensible graphical displays
- Versatile thresholding - offers default, user-configurable and adaptive (learned from historical data) thresholds, device-specific or network-wide

### BENEFITS

- Wide tailorability - simplify management with a personalized web portal; select views, reports, event notification priorities and threshold configurations to suit your specific needs
- Proactive problem identification - spot performance changes in real time; no need to wait for periodic reports
- Rapid problem resolution - cut diagnosis and resolution times from hours to minutes and minimize trouble tickets with powerful visualization and analysis tools
- Enhanced user satisfaction - pre-empt performance-threatening issues before they degrade service quality; verify external vendors' SLA compliance in real time
- Network-wide visibility - identify problems in the context of overall network performance, not as isolated events; uncover event patterns that underlie chronic performance problems
- Reduced operations and training costs - capitalize on web-based capabilities and derive immediate value



# OPERATIONS AND SPECIFICATIONS

## Performance Monitoring

- Personalized web portal monitors quality of services being delivered
- Extensive set of access control mechanisms provide customizable views of network performance to a broad range of users
- Automatic discovery and inventory change identification of networked SNMP and RMON enabled devices
- Allows users to be proactive in requesting bandwidth and service requirement changes before performance is impacted

## Data Collection

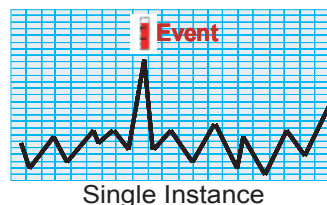
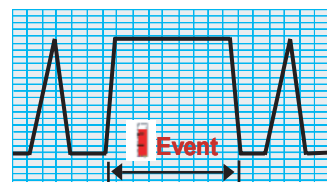
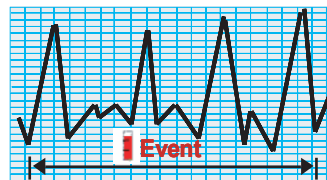
- Leverages VitalSuite data collection pollers to prevent network traffic spikes due to data collection
- Supports alarming for all data collected by VitalSuite Network Performance Management software
- Collects key performance data including utilization, packet loss, Internet Control Message Protocol (ICMP) data and throughput for network elements and interfaces
- Flexible architecture supports new and existing network elements defined within VitalSuite Network Performance Management system
- Capacity designed for at least 8 days of periodic data and 32 days of events

## Visualization

- IP Topology map views with auto-discovered devices, subnetworks (nodes) and links showing real-time alarms
- Automatic (IP) and manual path and subnetwork generation and analysis, maps display route paths through the network
- Device / Alarm summary with drill-down expansion
- TTabular text views with powerful searching and sorting of performance data, including a summary display with drill-down expansion; tables can be customized by specifying columns, column order, and default sort order

## Advanced Thresholds

- Flexible threshold capability (includes default, user-configurable and adaptive - based on historical data) generates events for network conditions according to user-established parameters
- Customizable "business aware" threshold can be set for various times of the day or week
- Rate-based thresholds enable alerts based on multiple occurrences of performance events over a specific time period
- Exception conditions by thresholding interval across reporting groups allows exception conditions to be configured as active only during a certain time-of-day, for SLAs that apply during specific periods
  - For example, an alarm can be specified to only be generated if the defined threshold is crossed between 9AM and 3PM, on Wednesday and Thursday, and only if the violation persists for at least 5 minutes in a 60 minute time window



## Event/Alarm Processing

- Email notification of thresholding events
- SNMP traps with alarm details for generated alarms can be sent to multiple destinations such as SMARTS, Aprisma, HP OpenView, Micromuse™ NetCool®
- Users can suppress events or be notified of events regardless of what screen is being viewed
- Flexible configuration options allow specific messages (or messages about specific devices) to be sent
- "Event Index" ranks the relative importance of multiple network events

## Monitored Devices/Resource Types

- Routers: Cisco (including Cisco NetFlow 5.0, WAN Manager, CAR and SAA / IP SLA Agents), Nortel, 3Com, Juniper™ (JUNOS 6.2), Alcatel-Lucent 7x50 Service Switch & Router family, Redback™
- WANs: Circuits, Frame Relay PVCs, ATM PVCs, ATM trunks, logical ports on WAN switches, RMON2 ATM Probes and routers
- LANs: Ethernet, Token Ring, switches/hubs, SMON VLAN
- Servers: Microsoft™ WMI, NT/2000, Exchange, Linux, UNIX™, Novell™, Compaq, SNMP Research, BMC, Cisco, CNT, Brocade, Nishan & McData SANs, Alcatel-Lucent VitalQIP DNS & DHCP and VitalSuite AAA
- VoIP: Alcatel-Lucent VoIP OmniPCX Enterprise, IP Phone - Cisco VoIP CCM (ver 4.0, 4.1 & 4.2) - Avaya VoIP Monitoring Manager (VMM- ver 3.1) - BroadWorks Application, Media, Network servers - Brix Networks SCCP, RTP, H323 Active Test Suites - Kagoor VF series
- Firewalls: Alcatel-Lucent Brick devices: LSMS 7.2, Cisco, Checkpoint and Juniper
- Alcatel-Lucent PSAX, OmniSwitch, OmniAccess WLAN, OmniStack, ISAM/ASAM (DSL) and Genesys Contact Center solution resources
- Alcatel-Lucent VoIP Agent: Speech Clarity, Conversational Quality, Call Setup Metrics
  - Wireless: Comprehensive Wireless Coverage 2.5 and 3G MSC/Wireless Routers, CDMA, CDMA 2000 UMTS, GPRS, UTStarcom and Cisco PDSN
  - Wireless LANs (802.11 MAC MIB), WiMax Alvarion BreezeMax, WMAN - WiMax
  - Over 50 Vendors supported plus free GUI based MIB toolkit to custom build or add new data collectors
  - Over 640 devices certified

To learn more about these and other enterprise management solutions, contact your Alcatel-Lucent sales representative, authorized reseller or sales agent. You can also visit our web site at <http://www.alcatel-lucent.com/vital>.

Alcatel, Lucent, Alcatel-Lucent, Alcatel-Lucent logo and VitalSuite are trademarks of Alcatel-Lucent. All other trademarks are the property of their respective owners. The information presented is subject to change without notice. Alcatel-Lucent assumes no responsibility for inaccuracies contained herein. © 2008 Alcatel-Lucent. All rights reserved.

VNRT.DS.1 04/08