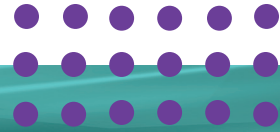


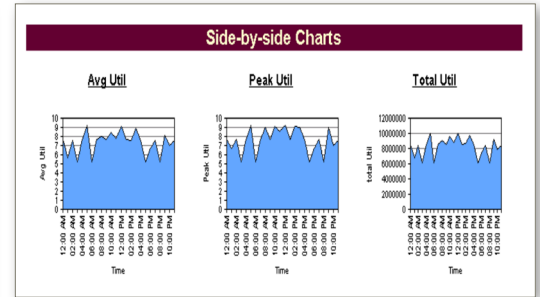
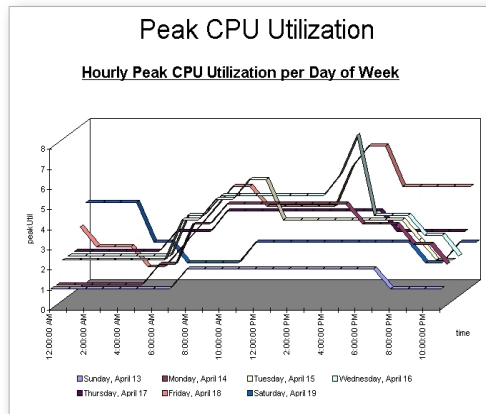
# VitalSuite™ Advanced Reporting Tool

## Release 10.2



Simplify your network and application performance management and increase productivity

VitalSuite Advanced Reporting software is a comprehensive Web-based tool that enables you to generate custom presentation-quality reports and graphs by extracting



VitalSuite Advanced Reporting software, a wizard-based report generation system, offers the ultimate in report flexibility.

monitored data from your VitalSuite Network and Application Performance Management software products. With VitalSuite reporting software, administrators no longer need to export files to complex and expensive commercial reporting packages. The flexible formatting power of the software lets you easily transform performance data to dynamic, custom reports and quickly determine the status of your network infrastructure and applications. It optimizes the report capabilities of your VitalSuite Performance Management software to increase resource efficiency and staff productivity.

VitalSuite Performance Management software, the market-leading management tool, provides on-demand access to critical network and application performance information necessary to preempt problems, optimize resources and plan for maximum return on your network investment (ROI). The advanced reporting software works with your VitalSuite system to provide the centralized reporting capabilities you need to achieve end-to-end visibility—clearly and rapidly—into your geographically dispersed, multi-vendor infrastructure.

### FEATURES

- Fully integrated reporting tool - provides access to all VitalSuite Performance Management software data sets, calculations, multi-level domain and group definitions; automatically discovers new collector data added
- Powerful custom reporting tool - supports a wide variety of chart types with robust cataloging, viewing, exporting and scheduling options
- 100% web based report administration package - provides reports that can be private or published across your organization
- Multi-platform support - supports both Microsoft Windows® and Sun® Solaris® operating systems
- Easy to use - Out-of-the-box functionality via a wizard-based structure and step-by-step operating procedures

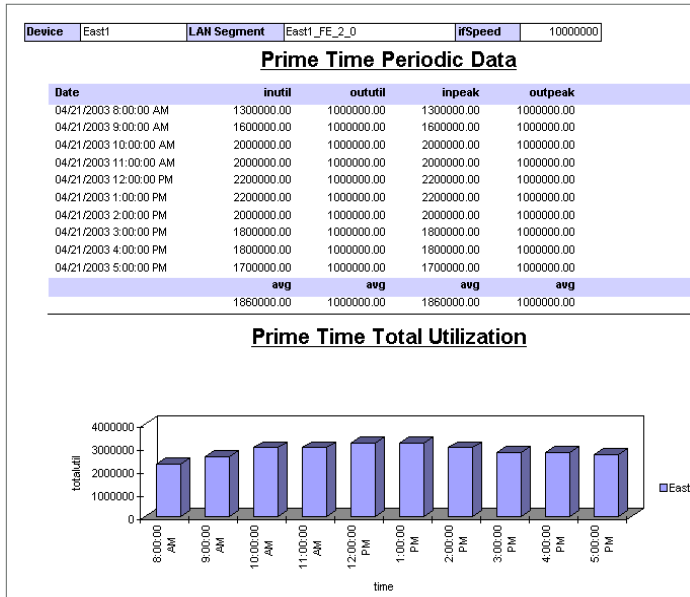
### BENEFITS

- Increases staff productivity by shortening analysis time, allowing staff to focus on other value added activities
- Optimizes and consolidates network resources with no additional IT overhead
- Facilitates informed, performance-based network investment decisions
- Helps to proactively prevent service problems; improves customer satisfaction
- Helps verify service quality and capacity utilization at a glance



# OPERATIONS AND SPECIFICATIONS

VitalSuite Advanced Reporting software supports a wide variety of chart types and reporting options to graphically depict only the actionable data you need. Use the software to optimize resources, proactively preempt service problems, perform a trend analysis and make informed network investment decisions.

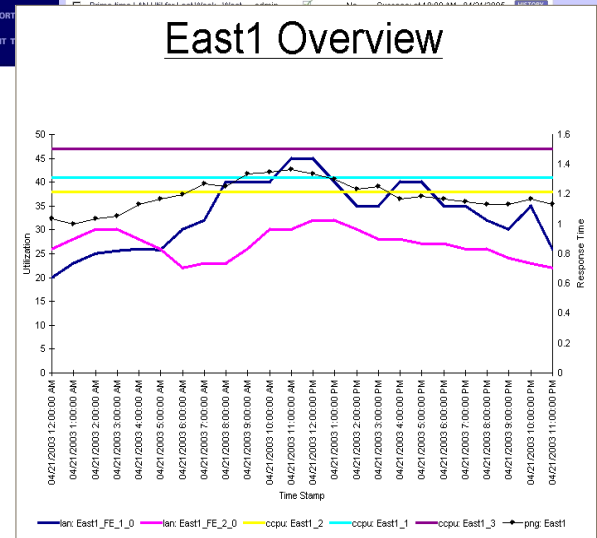
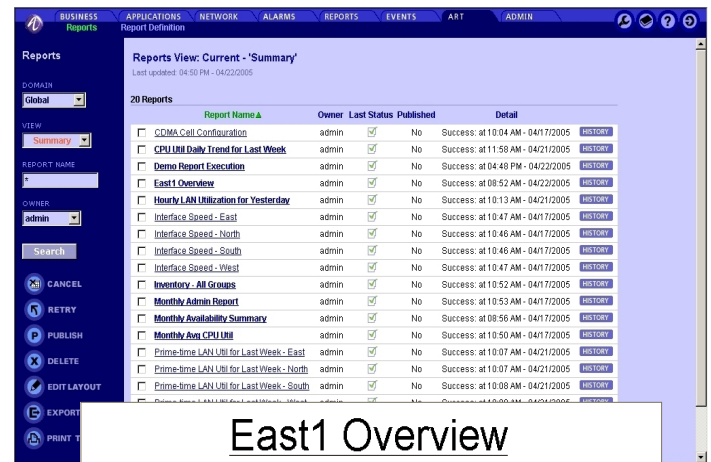


Example of a section in table format with two subsections – one graph and one chart

The unique flexibility of the VitalSuite software allows you the freedom to choose your own metrics, custom counts, report designs, report type, reporting period and report outputs, providing a truly versatile, easy to use and customized presentation system for performance data. Access to the detailed information can allow users to analyze the data and determine the root cause of network and application performance problems at a glance. Regression analysis provides a trend of what has happened and then based on this data makes a fair approximation of what can be expected in the future. The software includes percentile reporting, the capability to plot multiple resources on a single graph as well as reporting both application and network data on a single report. It provides the flexibility of defining reports your way with your corporate logo, data, format and timing information.

## Ease of Use

- Automatically determines VitalSuite Performance Management software datasets and schema
- Incorporates VitalSuite Performance Management Software system multi-level domains, groups and user permissions
- Simplifies reporting across VitalSuite software's distributed architecture
- Presents single view of periodic and configuration information
- Allows for conditional chart generation
- Enables selection of periodic data aggregation level at report execution – no need to duplicate reports for hourly/daily/weekly/monthly data
- Allows definition of hierarchical reports by determining relationships between datasets
- Multi-Pass Reports allow information to have dependencies on data in parent reports
- Supports Unicode 3.0



Easily author, manage and control reports

# OPERATIONS AND SPECIFICATIONS

## Report Flexibility

- Each section can contain tables, graphs, cross-tab or a combination
- Supports a variety of tabular formats, plus bar, area, pie and line chart types
- Users can:
  - Add, edit, copy, delete and reorder sections
  - Add sub-sections within sections
  - Name the section
  - Pick the format (Tabular, Chart)
  - List and pick the data set and format of data values
  - List and select fields to use within the report
  - Define their own fields
  - Override displayed field names and width of any field
  - Display aggregated data using functions: average, minimum, maximum, first, last, total and count
  - Preview selections
- Users can specify:
  - Up to 10 field groupings
  - Ascending / Descending options
  - Report output on “Top N Records”
  - Page break handling
  - Sorting - up to 10 fields
  - Custom fields and display order of the fields
  - Filters for report output
  - Report categories
  - SQL supported expressions
  - Report titles – free text and run time values
  - Customized chart fonts for
    - X and Y-axis values/labels – separate for each
    - Legend labels and Chart Title
  - Text displays to add notes
  - Conditional styles based on a value to highlight a datapoint - font, font size, foreground and background color can be controlled
  - “Hidden” fields – fields used in generating the report that are not displayed
  - Special functions - max/min/avg, count, percentile
  - Constraints on the data that is to be included in the report - up to 2 constraints per field - And/Or - custom
  - A logo - tailor font styles and colors
  - Page orientation and page size
- Graph definitions allow you to specify:
  - The value for the X-axis
  - The value for each Y-axis
  - The value for the Series
  - Auto, manual or matching of left & right Y axes scales
  - Chart size and side-by-side chart placement
  - Multiple series – up to six - to plot against the Y axis

## Scheduled Report Capabilities

- Daily, weekly, monthly
- Every “x” days, weeks, months
- Based on the day of week and/or day of the month
- Multiple selectable times of day to run reports
- Optional schedule end date
- Email delivery

## Data Sources

- VitalSuite Advanced Reporting Tool allows reports on all of the raw performance statistics that are collected and calculated by VitalSuite Network and Application Performance Management software
  - Some examples include: Any collector currently available in VitalSuite Network Performance Management software, LAN / WAN counts, MPLS and QoS data, 95th percentile utilization data, Key Performance Indicators, Quality Indexes, Router measurements, device IP addresses, etc.
  - Normalized CDR call performance statistics for VoIP
- Includes data defined via MIBWorks or DataWorks
- Automatically identifies new datasets added to VitalSuite Performance Management software and makes the data assessable to the user community
- Supports Coordinated Universal Time (UTC) values and formats as a date and/or time string

## Report Administration

- Catalogs existing reports and provides history, copy, publish, export and print functions
- Allows a variety of viewing/exporting options including PDF, CSV, XLS (Excel), RTF, XML, ZIP and HTML formats
- Reports page allows users to manage and/or run existing reports
  - Summary view shows the report name, owner, last status and detail, access to history
  - “Count” view shows status details; how many instances of the report are scheduled, pending, running, success, failure, cancelled
- Reports are organized based on VitalSuite Performance Management software multi-level domain definitions and are private unless published to others in the domain
- Allows “View Only” permissions
- Customizable display format without re-running the report
- Search based on report name, definition name, category, or owner
- Report definitions import/export function

## Client/Administrator Interface Requirements

- IE 7.0, 6.0 or Netscape® 7.1
- Video resolution 1024 x 768
- Acrobat Reader 4.0/5.0 with browser plug-in

## System Requirements

- Windows® 2000/2003
  - Two 1.5 GHz processors (or better), 2 GB RAM and 150 GB free disk space, CD-ROM Drive, Windows® 2000/2003, SQL 2000/2005 Database
- Sun® Solaris®
  - Two 900 MHz processors, 2 GB RAM and 75 GB Free storage on hard disk, 2 Ethernet 10/100 ports, Solaris 9/10, and Oracle® 9/10 Database Server

### VitalSuite Performance Management software portfolio

Optimize network, application and business performance

Alcatel-Lucent, a proven global provider of market leading performance management solutions that maximizes profitability and productivity and helps you leverage IT investment for a competitive advantage. Alcatel-Lucent's award-winning VitalSuite Network and Service Management portfolio is used today by more than 1500 enterprises worldwide, including over 75% of the Fortune 100.

Alcatel-Lucent leverages innovations from Bell Labs and experience and expertise from Alcatel-Lucent Worldwide Services to provide highly flexible, scalable solutions that enable converged services, enhance the user experience and accelerate time to revenue. Alcatel-Lucent partners with world-class system integrators, complementary ISVs and hardware vendors to deliver end-to-end solutions that reduce operational complexities, ease integration costs and maximize profitability.

VitalSuite Network Performance Management software provides the critical network information necessary to preempt problems, optimize resources and plan for maximum return on network investments (ROI). It provides end-to-end, web-based visibility into geographically dispersed, multi-vendor, multi-technology converged infrastructure. It enables IT managers to monitor, analyze, manage and predict performance from a single centralized location.

VitalSuite Real-time Event Analysis software helps optimize multi-vendor packet data and voice networks with powerful real-time capabilities that traditional management products cannot match. It offers technically advanced tools to monitor, measure, analyze and visualize performance data and immediately identify network resources that have exceeded defined network service levels.

VitalSuite Application Performance Management software monitors the performance of network-based applications, presenting real-time views of each user transaction from the desktop, across the network or Internet, to the servers, and back again. Network managers get a complete picture of the overall application performance across the network since the software continuously collects data from all ongoing applications activity.

To learn more about these and other management solutions, contact your Alcatel-Lucent sales representative, authorized reseller or sales agent. You can also visit our web site at <http://www.alcatel-lucent.com/vital>.

Alcatel, Lucent, Alcatel-Lucent, Alcatel-Lucent logo and VitalSuite are trademarks of Alcatel-Lucent. All other trademarks are the property of their respective owners. The information presented is subject to change without notice. Alcatel-Lucent assumes no responsibility for inaccuracies contained herein.

© 2008 Alcatel-Lucent. All rights reserved.

VART.DS.1 04/08