



PACKETEER®

Packeteer's AppCelera™ ICX

Internet Content Accelerator

A slow web site can destroy business. From mission-critical applications to e-commerce, response time is crucial for keeping users and businesses humming. However, web performance is complicated by the access-speed disparity in broadband, wireless, and dial-up users. It is also at the mercy of SSL transactions, which can slow content delivery at the expense of protecting sensitive information. Internet application developers are torn between developing a rich and secure web experience and delivering acceptable performance.

*Static, Dynamic,
SSL Content
Accelerated by as
Much as 500
Percent*

*SSL Support
Avoids Sacrificing
Speed for Security*

*No Need to
Develop Multiple
Web Sites*

*Drop-In
Installation With
No Impact on
Servers or Clients*

The Solution: Fast and Secure

AppCelera ICX accelerates static, dynamic, and SSL-based content by as much as 500 percent and offloads SSL transactions from servers to further boost web performance. AppCelera ICX enhances the delivery of web content by utilizing compression and transformation technology.

In addition, AppCelera ICX adapts content to suit real-time characteristics such as a user's access speed and browser type. Plainly put, AppCelera ICX makes Internet content fast.

Acceleration at Work

Content-aware Compression: AppCelera ICX reduces the size of typical HTML pages by as much as 85 percent, boosting the delivery of web content up to 500 percent. Its compression technology frees up extra bandwidth for additional transactions. AppCelera ICX uses decompression technology already existing in browsers, so there is no need for client-side software.

Browser-Based Transformation:

Understanding popular browsers' rendering habits, AppCelera ICX optimizes static and dynamic content in the format that each browser displays most efficiently.

Speed-Based Transformation: AppCelera ICX automatically tracks each user's real-time connection rate and dynamically creates speed-based versions of web objects.

A user on a high-speed connection with little congestion receives the highest quality content available. If congestion or a slow-speed connection reduces a user's rate, AppCelera ICX adjusts static and dynamic content to ensure that the user still experiences short

wait times. AppCelera ICX's awareness eliminates the need to author and maintain multiple versions of a site and keeps slow-speed users productive while preventing them from enduring long waits for page loads.

Content Variant Storage: AppCelera ICX stores the variants of compressed and transformed content for future use in a way that matches a user's browser and connection speed. This makes subsequent requests even speedier and more efficient.

Speedy SSL Processing

Encryption/decryption and secure key generation impose a heavy toll on servers that handle SSL-based e-business transactions, degrading server performance by as much as 10 times. The price for security is slow and frustrating web performance.

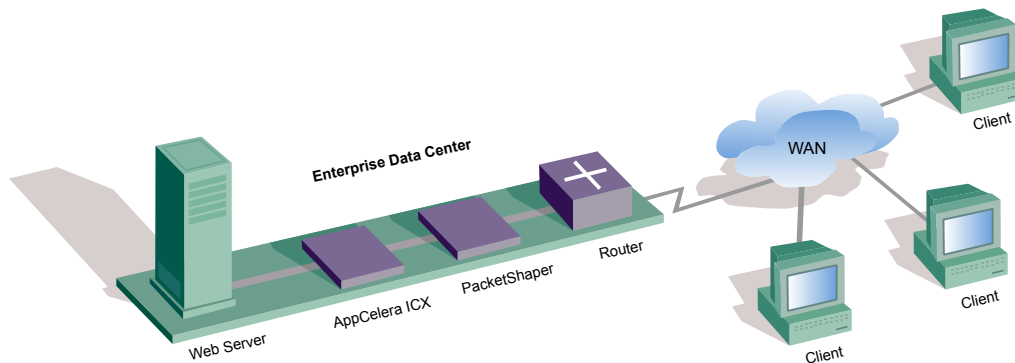
AppCelera ICX-75s enables administrators to avoid this tradeoff and have the best of both worlds – security *and* speed. AppCelera ICX boosts server performance by offloading SSL processing from the entire farm. This lightens existing servers' loads, eliminates the degradation that occurs during SSL processing, and scales server farms to their pre-SSL level of performance.

After offloading SSL processing, AppCelera ICX's compression and optimization technology accelerate these transactions by as much as 500 percent, solving the last-mile problem that inherently hinders content delivery.





PACKETEER®



Ease of Use

AppCelera ICX systems are plug-and-play stand-alone appliances that sit next to a web server or server farm. They integrate smoothly with existing networks and require no changes to protocols, servers, router configurations, topologies, or desktops. AppCelera ICX systems are not points of network failure; if they go down or are turned off, they act like a piece of cable, and servers resume handling web content. Three models, AppCelera ICX-55, ICX-75, and ICX-75s, handle a variety of capacities and web loads. All AppCelera ICX systems speed web performance, boost bandwidth and server efficiency, and eliminate dual web site maintenance. ICX-75s adds the function of offloading and accelerating SSL transactions, which further reduces user wait times. It is the ideal solution for remedying frustrating web sites and sluggish applications.

AppCelera ICX Specifications

Capacity

- ICX-55: 200 connections per second
- ICX-75: 400 connections per second
- ICX-75s (SSL offload): 400 connections per second
- Spillover passed to web servers

Acceleration Criteria

Set acceleration rules based on:

- File names, file types
- Directory names
- Web servers: all, virtual, or specific

Apply acceleration to:

- Text: HTML, XML, JSP, ASP, CSS
- Graphics: JPG, GIF
- JavaScript
- Shockwave Flash

Interfaces

- Console port: RS-232 (AT-compatible) with male DB-9 connectors
- Network interface: 10/100 Mbps Ethernet
- W3C-format log files for use in 3rd-party web-analysis tools

Dimensions

- Standard 19-inch rack mount
- Height: ICX-55: 1.75 in (4.45 cm)
ICX-75, ICX-75s: 3.5 in (8.89 cm);
- Weight: ICX-55: 13 lb
ICX-75, ICX-75s: 16 lb (7.26 Kg)
- Width: 17.20 in (43.69 cm)
- Depth: ICX-55: 14 in (35.56 cm)
ICX-75, ICX-75s: 15.25 in (38.74 cm) (incl. handles)

Power

- 100/240 VAC, 50/60 Hz, 2A
- ICX-75, ICX-75s: Dual, redundant, load-sharing power supplies and dual power source connections

Device Management

- DB-9 console port
- Web-browser interface
- Telnet command-line interface

Agency Approval

- FCC Part 15: Class A
- CE mark; TUV GS mark, EN 60950; CSA mark No.950-1993
- Ctick-approved
- VCCI-approved



PACKETEER®

10495 N. De Anza Blvd. - Cupertino, CA 95014

Tel: (408) 873-4400 - Fax: (408) 873-4410 - www.packeteer.com

2000-2001 Packeteer, Inc. All rights reserved. Packeteer, PacketShaper, AppVantage, AppCelera, PacketWise and PolicyCenter are trademarks or registered trademarks of Packeteer, Inc. All other trademarks are property of their respective owners.

1113.B 8/01 10M